

# WELCOME TO SAINT JULIANA BINGO

## DECEMBER

Doors Open 4:30 · Sales Start 5:00 · Kitchen Opens 5:30 · First Ball 6:40

### Card Games Order · Only One Player Per Form

#### PAPER CARD PACKAGES

##### \$20 · Rookie Paper Pack

- 9 bingo cards
- 6 raffle cards

##### \$30 · Player Paper Pack

- 18 bingo cards
- 12 raffle cards

#### PAPER + COMPUTER CARD PACKAGES

##### Rookie Paper + Computer Packs

- \$35 · Rookie + 36-card computer
- \$39 · Rookie + 60-card computer
- \$43 · Rookie + 84-card computer

##### Player Paper + Computer Packs

- \$45 · Player + 36-card computer
- \$49 · Player + 60-card computer
- \$53 · Player + 84-card computer

#### ADDITIONAL RAFFLE GAMES (not in computers)

##### Odd-Even · Game #1 \$107 + \$1,007 jackpot

- \$3 each
- 2 for \$5

##### SuperStrip · Game #8 Progressive

- \$5 each
- 3 for \$12

##### Super 7s · Game #17 \$177 + Progressive

- \$7 each
- 2 for \$12

#### EXTRA CARDS (circle to order)

##### Extra Paper Cards

- 1-card bingo card pack · \$1
- 9-card bingo pack · \$10
- 18-card bingo pack · \$15
- 6-card raffle pack · \$10
- 12-card raffle pack · \$15
- 24-card raffle pack · \$25

##### Extra Computer Cards

- 48 extra cards · \$15
- 84 extra cards · \$25
- 96 extra cards · \$30
- 144 extra cards · \$45

**Want more? Ask our seller!**

WELCOME TO SAINT JULIANA BINGO - DECEMBER

<b>1</b>	<i>Odd/Even: Large Picture Frame on one card - Raffle with Jackpot Board</i>	<i>3-card paper strip</i>	<i>\$107 + Progressive</i>
*	<b>2</b> Regular Bingo or Four Outer Corners	Blue	\$125
*	<b>3</b> Hard-Way Bingo (no free space)	Orange	\$125
*	<b>4</b> Special Bingo: Christmas Tree	Green	\$225
*	<b>5</b> Regular Bingo or Four Inner Corners	Yellow	\$125
*	<b>6</b> Regular Bingo or Four-Pack (no free space)	Pink	\$125
	<b>7</b> Four-Corner Postage Stamp	Pink	\$350

INTERMISSION

<b>8</b>	<i>SuperStrip: Coverall two cards on one strip - Raffle for Progressive Jackpot</i>	<i>5-card strip</i>	<i>Progressive <b>OR</b> \$300</i>
*	<b>9</b> Special Bingo: 2 Bingos/Wild #/No corners	Gray	\$225
	<b>10</b> Special Bingo: Snowflake	Olive	\$350
*	<b>11</b> Hard-Way Line (no free space)	Red	\$125
*	<b>12</b> Hard-Way Six-Pack (no free space)	Olive	\$150

NEW YORKER GAMES (played on same card)

<b>13</b>	"X" Game	Gray	\$125
<b>14</b>	Large Picture Frame	" "	\$175
<b>15</b>	Coverall	" "	\$750
<b>16</b>	Second Chance Coverall	" "	\$150

<b>17</b>	<i>Super 7s: Get any three 7s on one sheet - Raffle with Progressive Jackpot Board</i>	<i>9-card 7s paper sheet</i>	<i>\$177 + Progressive</i>
-----------	--	--------------------------------------	--------------------------------

*Additional \$25 paid if game 2-6 or 10 is won in 5 balls or less.*

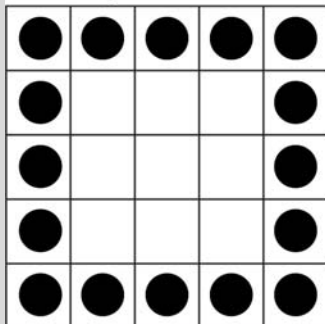
\* *Magic Number games*

*Shaded games are NOT in the computers. Cards for these games may be purchased until game begins.*

Shaded games are not played in the computer .

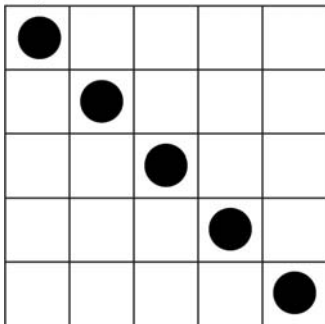
**1 · Odd-Even**

Large Picture Frame



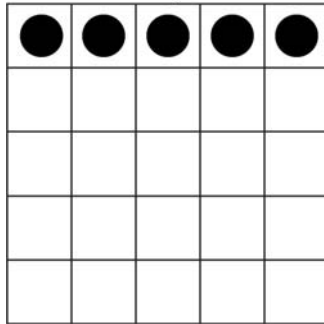
**2**

Regular Line or Four Outer Corners



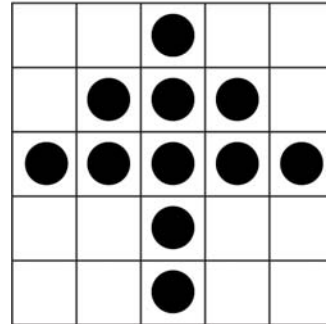
**3**

Hardway Line



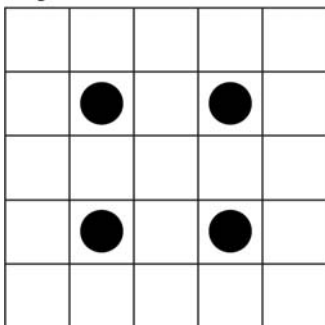
**4**

Christmas Tree



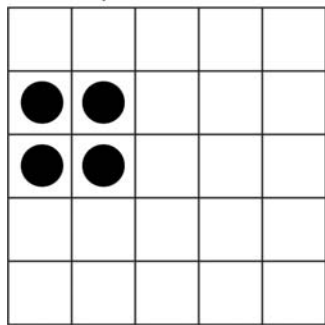
**5**

Regular Line or Four Inner Corners



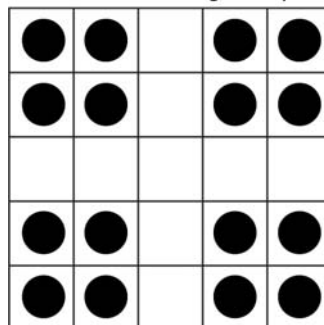
**6**

Hard-Way Line or One Four-Pack



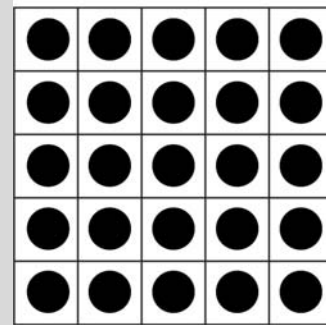
**7**

Four-Corner Postage Stamp



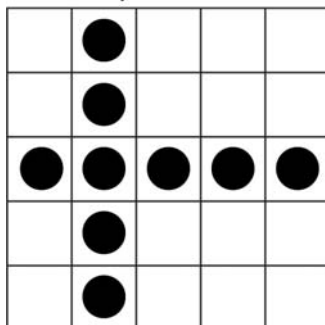
**8 · SuperStrip**

Coverall



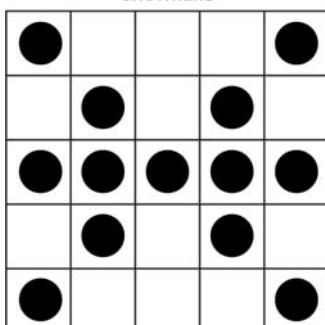
**9**

Wild # / Any 2 Lines / No Corners



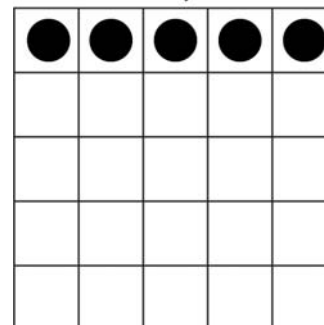
**10**

Snowflake



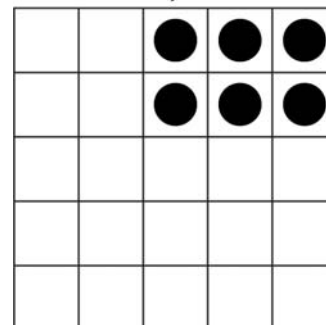
**11**

Hardway Line



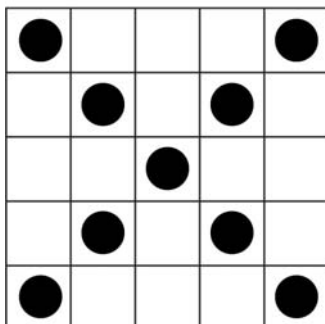
**12**

Hard-Way Six-Pack



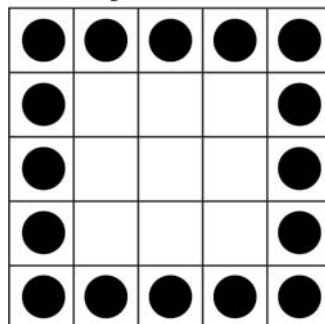
**13**

Letter X



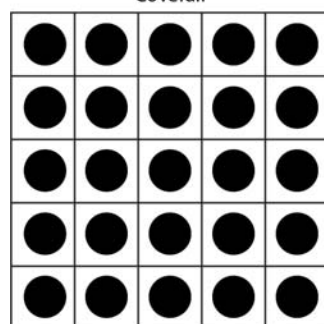
**14**

Large Picture Frame



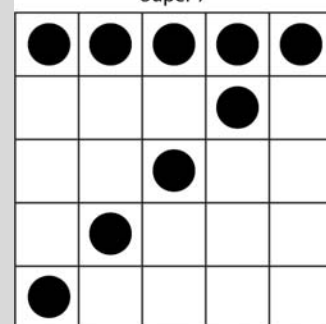
**15 & 16**

Coverall



**17 · Super 7**

Super 7



**Please read carefully:** You must be 18 years of age. Each player must purchase their own paper cards to participate in bingo, raffles or other games. No splitting of cards between players. Daubers must be used on paper cards. **It is the player's responsibility to loudly or otherwise conspicuously announce WINNER (bingo or raffle) to alert caller/floor workers to stop the game.** Players must win on the last number called. Once the caller closes the game no other bingo/raffle winner(s) will be honored. Multiple winners will split prize equally; minimum prize is \$5. Only one payout prize per face will be honored. No refunds or exchanges will be made for unused paper, specials or packages for any reason.

**Management reserves the following rights at its sole discretion:** To inspect bags, purses and personal items upon entry. Refuse admittance to or remove from the premises with no refund any person: who cannot produce government-issued ID proving age; who is disruptive, unruly, unacceptably loud or under the influence of or in possession of illegal substances; regardless of cause. To reduce prize amounts for low attendance; cancel bingo due to weather or factors beyond our control; change game schedule, program or prices without prior notice. To withhold prize payment due to altered or illegible cards, numbers, free spaces, serial numbers or bar codes; to persons unable to provide government-issued ID, Social Security number and completion of IRS Form W-9 for prize payments of \$600 or more.

**We are not responsible for lost, stolen or damaged personal property. Disputes must be directed to the Bingo Operator and management's decision is final.**

**Be sure to follow us online for exclusive offers!**

**Website: [stjuliana.org/bingo](http://stjuliana.org/bingo)**

**[facebook.com/StJulianaBingo](https://facebook.com/StJulianaBingo)**

**Instagram: [@StJulianaBingo](https://instagram.com/StJulianaBingo)**

**YouTube: Search for "St Juliana Bingo" channel**

**Card Game Patterns:** Examples provided are representative but not inclusive of all possible winning patterns. Some patterns have multiple winning combinations. Please refer to the flashboards or handheld computer screens for alternative combinations, or ask a worker for clarification before any game closes. Shaded pattern games are not played in computers.